

# The Treasury and Office of the Minister of Finance

## Budget 2019 Information Release August 2019

This document has been proactively released by the Office of the Minister of Finance on the Treasury website at <https://treasury.govt.nz/publications/information-release/budget-2019-information-release>

### Information Withheld

Some information in this document has been withheld under one or more of the sections of the Official Information Act 1982.

### Key to sections of the Official Information Act 1982 under which information has been withheld:

Good reasons for withholding the information exist, as the making available of that information would be likely to:

- |      |   |          |
|------|---|----------|
| [1]  | prejudice the security or defence of New Zealand or the international relations of the Government of New Zealand  | 6(a)     |
| [4]  | prejudice the maintenance of the law, including the prevention, investigation, and detection of offences, and the right to a fair trial   | 6(c)     |
| [23] | damage seriously the economy of New Zealand by disclosing prematurely decisions to change or continue government economic or financial policies relating to the entering into of overseas trade agreements. | 6(e)(vi) |

Withholding the information is necessary for the following reasons and is not outweighed by other considerations, which make it desirable in the public interest to make it available:

- |      |  |             |
|------|--|-------------|
| [25] | to protect information where the making available of that information would be likely unreasonably to prejudice the commercial position of the person who supplied or who is the subject of the information  | 9(2)(b)(ii) |
| [31] | to maintain the constitutional conventions for the time being which protect collective and individual ministerial responsibility   | 9(2)(f)(ii) |
| [33] | to maintain the constitutional conventions for the time being which protect the confidentiality of advice tendered by Ministers of the Crown and officials   | 9(2)(f)(iv) |
| [34] | to maintain the effective conduct of public affairs through the free and frank expression of opinions by or between or to Ministers of the Crown or members of an organisation or officers and employees of any department or organisation in the course of their duty | 9(2)(g)(i)  |
| [37] | to enable a Minister of the Crown or any department or organisation holding the information to carry out, without prejudice or disadvantage, negotiations (including commercial or industrial negotiations)  | 9(2)(i)     |
| [38] | to enable a Minister of the Crown or any department or organisation holding the information to carry on, without prejudice or disadvantage, negotiations (including commercial or industrial negotiations)   | 9(2)(j)     |
| [39] | to prevent the disclosure or use of official information for improper gain or improper advantage   | 9(2)(k)     |

### Copyright and Licensing

Cabinet material and advice to Ministers from the Treasury and other public service departments are © Crown copyright but are licensed for re-use under Creative Commons Attribution 4.0 International (CC BY 4.0) [<https://creativecommons.org/licenses/by/4.0/>].

For material created by other parties copyright is held by them and they must be consulted on the licensing terms that they apply to their material.

### Accessibility

The Treasury can provide an alternate HTML version of this material if requested. Please cite this document's title or PDF file name when you email a request to [information@treasury.govt.nz](mailto:information@treasury.govt.nz).

# MCR Package For Budget 2019

## Purpose of this Discussion

- This is an opportunity to **discuss the near-final Budget 2019 package that I intend to take to Budget Ministers for approval on 8 April**. This discussion focusses on MCR-related priorities and portfolios – similar discussions are being held in SWC and DEV.
- Since our discussion on the draft Budget package, I have **incorporated feedback from Cabinet Committees, bilateral and multilateral meetings, and Budget Ministers**.
- I have appreciated your keen and constructive involvement over the past month. They have helped to shape a **strong Budget 2019 package that will significantly advance our Government's wellbeing objectives**.
- **Cabinet will consider the final Budget package on 15 April**. There are a couple of areas, including our response to events in Christchurch, that are still being developed but will be finalised ahead of Budget Ministers next week.

## Budget 2019 – Background Information






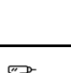


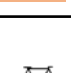
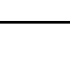
### Our Priorities for Budget 2019

- Priority A:** Creating opportunities for productive businesses, regions, iwi and others to transition to a sustainable and low-emissions economy
- Priority B:** Supporting a thriving nation in the digital age through innovation, social and economic opportunities
- Priority C:** Lifting Māori and Pacific incomes, skills, and opportunities
- Priority D:** Reducing child poverty and improving child wellbeing, including addressing family violence
- Priority E:** Supporting mental wellbeing for all New Zealanders, with a special focus on under 24

### Glossary

- Living Standards Framework:** A high-level framework on the intergenerational wellbeing of New Zealanders.
- Wellbeing Domains:** 12 dimensions of current wellbeing people experience.
- Types of Budget 2019 initiatives...**
  - *Priority-aligning:* An initiative that aligns to one of the five Budget 2019 priorities listed above.
  - *Non-discretionary cost pressure:* An initiative that responds to an increase in volume, price or personnel-driven costs needed to deliver an existing service. These involve limited discretion due to legislative or reputational reasons.
  - *Out of scope:* Initiatives not aligned to one of the five Budget 2019 priorities and not non-discretionary cost pressures.
- Timeframes over which impacts will be felt...**
  - *Short-term:* Within the next 5 years.
  - *Medium-term:* Within 5 to 10 years.
  - *Long-term:* More than 10 years in the future.

### Treasury's Living Standards Framework: Wellbeing Domains:

Civic engagement & governance		Engagement with governance and civics including trust and perceptions of fairness
Cultural identity		Sense of identity, belonging and ability to be oneself. Existence value of cultural taonga.
Environment		The natural and physical environment and how it impacts people today
Health		Mental and physical health
Housing		Quality, suitability and affordability of our homes.
Income and consumption		Disposable income from all sources, spending, and material possessions.
Jobs and earnings		Job quality, availability and stability (including remuneration), Positive work environment. Freedom from unemployment
Knowledge and skills		People's knowledge and skills
Safety		People's safety and security (real and perceived). freedom from fear and risk of harm.
Social connections		Having positive social contacts and support network
Subjective wellbeing		Overall life satisfaction and sense of meaning and self
Time-use		The quality and quantity of people's leisure and recreation time (that is, people's free time where they are not working or doing chores)

## Overview of Near-Final MCR Package

### Changes Since Draft Package

- Since the last round of Cabinet Committees, the package has changed significantly, particularly:
  - The package has [33]
  - The spread of initiatives has also changed across categories, with whānau wellbeing making up half of the total package.
  - The category names and definitions have changed, with input from Māori Ministers being incorporated. These are outlined below and overleaf.

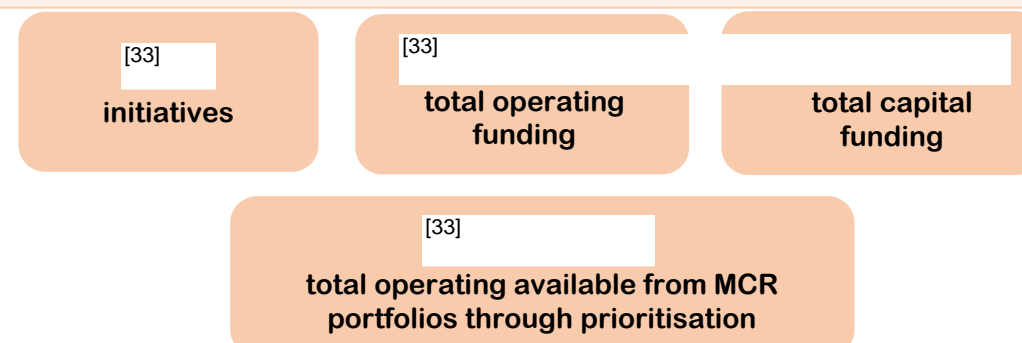
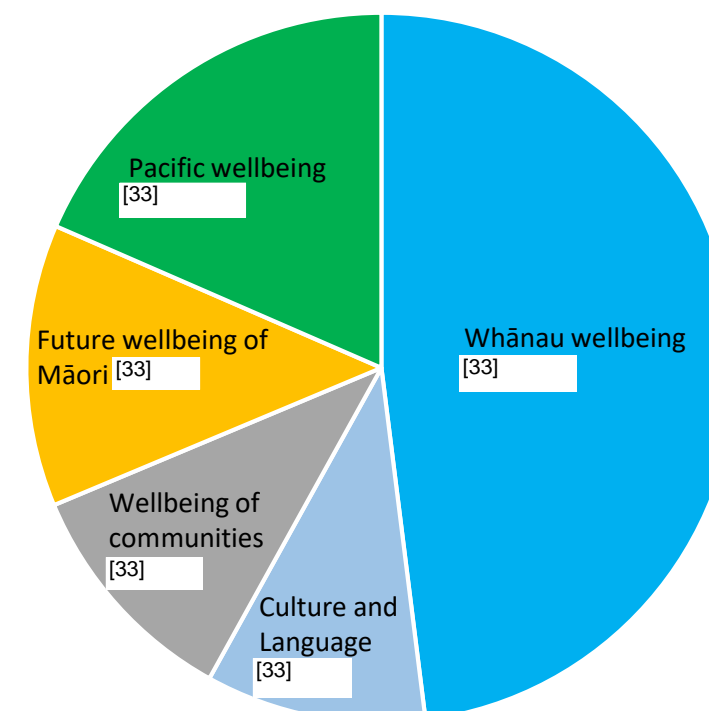


Fig 1 –Funding spread in final MCR package, all figures are total operating funding



**There are no pre-commitments against Priority C. There are no out-of-scope or cost pressure initiatives in the MCR package.** [33]

# Package for Priority C: Lifting Māori and Pacific incomes, skills and opportunities

## Initiatives outside Priority C

Priority C encompasses all initiatives which have a direct focus on lifting Māori and Pacific incomes, skills and opportunities.

However, there are a number of other initiatives outside Priority C which also have an indirect or tangential focus on these communities. These are observed in the diagram below.

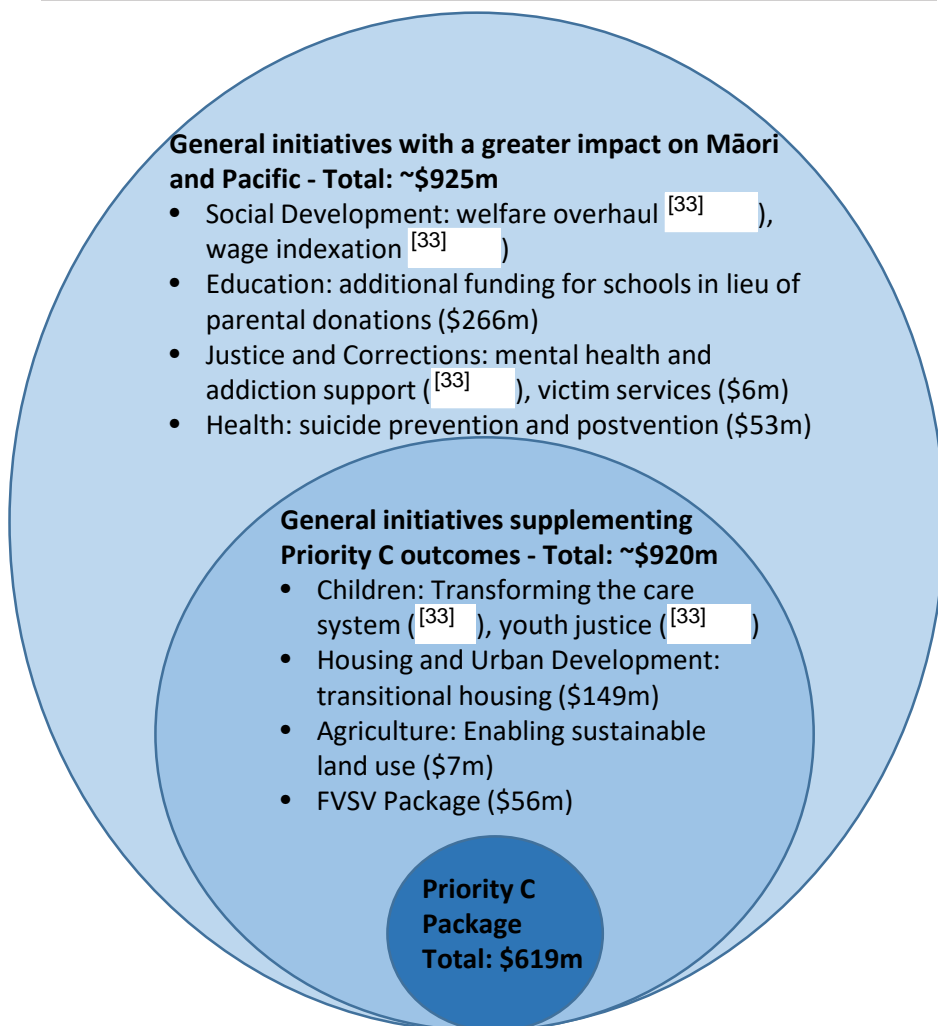
**Notes:**

- The inner circle represents the Priority C package.
- The second circle represents general initiatives that supplement the outcomes of Priority C, but are not exclusive to Māori and Pacific. The outer circle represents general initiatives where the impact is greater on Māori and Pacific communities.

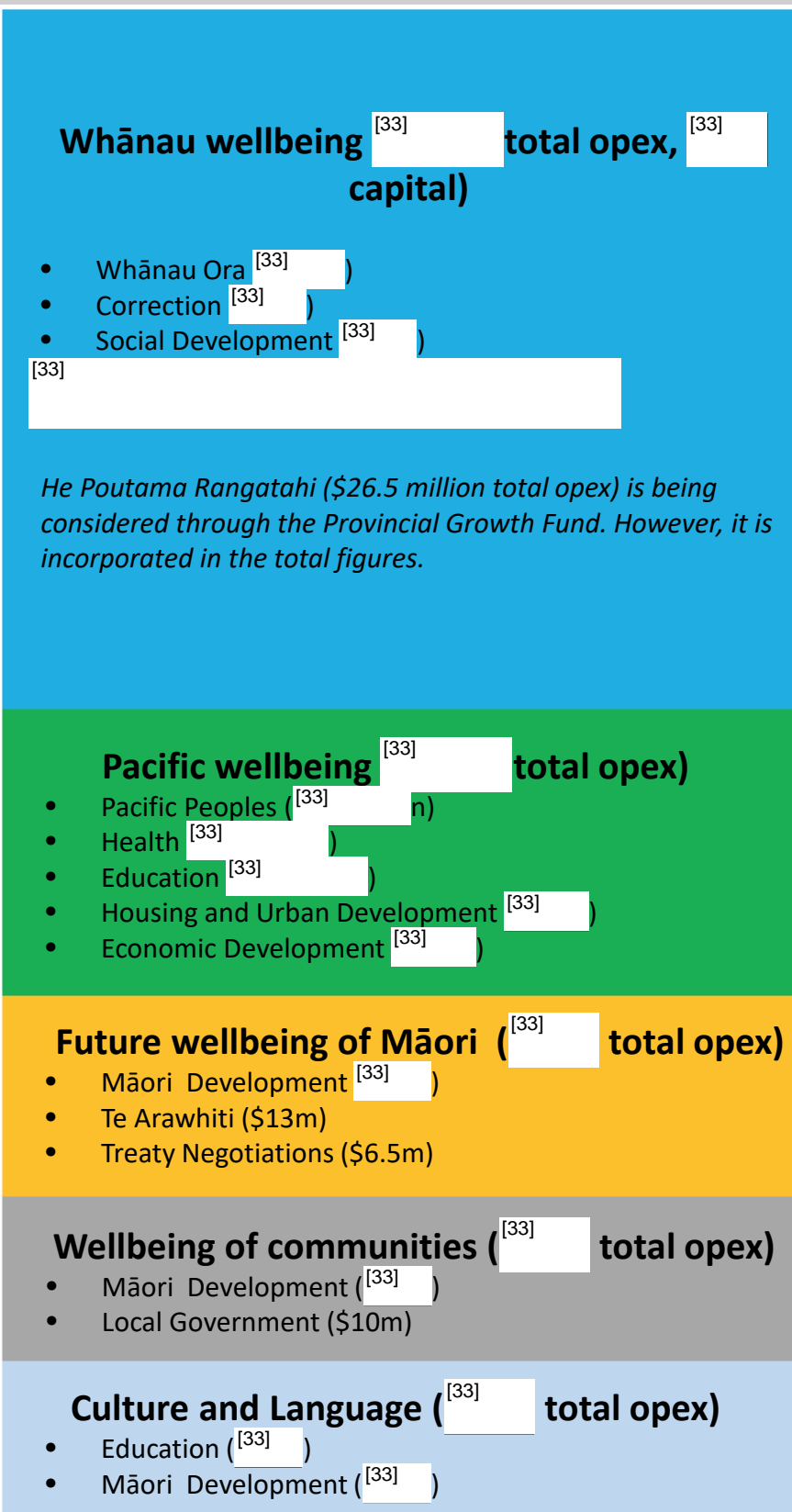
**Priority C + Second Circle = ~\$1.5 billion**

**Priority C + Second Circle + Third Circle = ~\$2.5 billion**

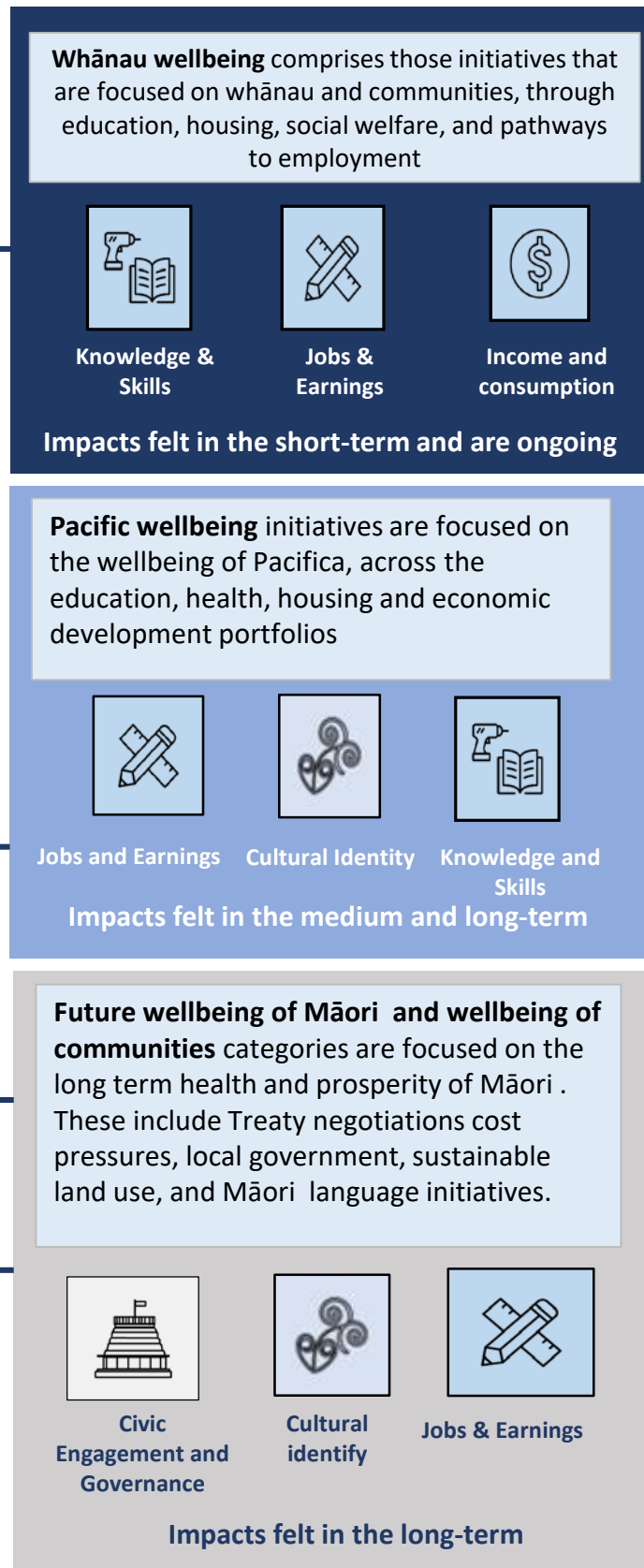
**The examples listed below are not exhaustive and the amounts may change as packages are finalised. All figures are total operating.**



## Portfolios represented in the final MCR package by category (all figures total operating)



## Wellbeing Domain Impacts



MCR INITIATIVES - PRIORITY C

No.	Portfolio	Title	Agency Description of Submitted Initiative	Expected Timeframe for Impact	Wellbeing domains impacted (in order of impact)	Near Final Package (\$m)		
						Opex Avg.	Opex Total	Capex Total
<b>WHĀNAU WELLBEING</b>								
11060	Whānau Ora	Expanding the coverage and impact of whānau Ora commissioning	<p>Providing quality support for more whānau to work towards and achieve their aspirations, build resilience and lift their overall wellbeing. It has three components:</p> <ol style="list-style-type: none"> <li>Expanding Commissioning Agencies' support for whānau</li> <li>Further developing the capabilities of Navigators to provide targeted support to tamariki, and whānau aiming to improve their financial capability</li> <li>Increasing Te Puni Kōkiri departmental funding to administer the expanded whānau Ora operations, run regular evaluations, and develop data capabilities.</li> </ol>	Long-term	Jobs and Earnings    Income and Consumption    Social Connection	[33]		
11067	Corrections	Hapaitia te Oranga Tangata – Māori and Pacific Pathways	This bid seeks funding to develop a new kaupapa-Māori based pathway for Māori who enter the prison system. The pathway aims to significantly improve rehabilitation and reintegration outcomes for Māori within the context of their whānau, hapu, iwi, and communities. Initiatives in this package will be delivered through Treaty partnerships with Māori; with outcomes driven by interventions and services that are effective and grounded in kaupapa Māori thinking and practices. This package also seeks funding to deliver programmes for Pacific youth in prison for serious violent offending to improve rehabilitation and reintegration outcomes.	Medium-term	Safety    Cultural Identity    Social Connection	14.993	59.970	3.000
11346	Whānau Ora	Paiheretia te Muka Tangata – Uniting the threads of the whānau	Funding is required over four years to develop and implement a new service that leverages a kaupapa Māori approach to support Māori aged under 25 in the New Zealand corrections system. This new form of support focuses on building strong relationships between individuals and their whānau, maximises opportunities for them to improve outcomes that contribute to lifting their wellbeing, and addresses issues which may have contributed to their involvement with the corrections system.	Medium-term	Safety    Cultural Identity    Social Connection	[33]		
[33]								
10923	Social Development	Employment: Support sustainable employment through expanding Mana in Mahi (Strength in Work)	This funding will extend an existing programme that supports people, particularly 18-24 year olds, to achieve sustainable employment outcomes. It pays a wage subsidy to employers who hire someone in receipt of a main benefit and offer that person industry training qualification opportunities. The wage subsidy is equivalent to one year of the Jobseeker Support benefit. Wrap-around and in-work support will be provided for employers and participants. Estimates assume some benefit savings to offset total costs [33]	Short-term	Jobs and Earnings    Knowledge and Skills    Not Applicable	[33]		
[33]								
11372	Social Development	Expansion of community-based collective impact programme to improve social outcomes of families and whānau	This funding will support expanding a multi-agency programme based on the current Kainga whānau Ora pilot, which is a collective impact programme focused on families and whānau living in Housing New Zealand homes in Palmerston North. The programme builds self-reliance by supporting whānau towards achieving their goals and aspirations. It focuses on improving housing and other social outcomes such as supporting children, boosting skills and employment, reducing reliance on benefits, and improving the health of whānau.	Medium-term	Subjective Wellbeing    Knowledge and Skills    Jobs and Earnings	[33]		
[33]								
New	Employment	He Poutama Rangatahi	This initiative was submitted as a joint MBIE/MPP initiative. The components have been split to avoid confusion. <b>The He Poutama Rangatahi (HPR) component is being considered through the PGF</b> , while the Pacific Employment Support Service (PESS) component is supported in full (see Pacific Initiatives category). HPR aims to reduce the rates of young Māori and Pacific peoples who are not in employment, education or training. It has been piloted in Te Taitokerau, Eastern Bay of Plenty, Gisborne/Tairāwhiti and Hawke's Bay and the Pacific Employment Support Service is being delivered in Auckland and Hamilton. This initiative seeks to extend the programmes beyond these areas to ensure young Māori and Pacific peoples are well supported across New Zealand.	Short-term	Jobs and Earnings    Knowledge and Skills    Not Applicable	6.638	26.550	-
<b>SUBTOTAL: WHĀNAU WELLBEING</b>						<b>74.423</b>	<b>297.599</b>	<b>3.204</b>

No.	Portfolio	Title	Agency Description of Submitted Initiative	Expected Timeframe for Impact	Wellbeing domains impacted (In order of impact)	Near Final Package (\$m)		
						Opex Avg.	Opex Total	Capex Total
<b>WELLBEING OF CULTURE AND LANGUAGE</b>								
11062	Māori Development	Te Whakarauoratanga o te reo Māori: Part A - Implementation of the Maihi Karauna and Te Whare o te Reo Mauri Ora	To achieve the ambitious goals of Te Ture mo Te Reo 2016 and the Crown's strategy (Maihi Karauna) to revitalise te reo me nga tikanga Māori. This initiative seeks funding to support Te Taura Whiri i te Reo Māori to lead the coordination of the implementation of the strategy across Government, expand the workforce of qualified Te Reo Māori translators, and supporting long-term campaigns to promote te reo Māori. Additional funding is sought for activities relating to the launch and implementation of the Maihi Karauna.	Short-term	Cultural Identity Knowledge and Skills Subjective Wellbeing	3.460	13.840	-
11064	Māori Development	Te Whakarauoratanga o te reo Māori: Part B - Implementation of the Maihi Māori strategy and Te Whare o te reo Mauriora	Together with the Maihi Karauna strategy, the Maihi Māori strategy aims to achieve the ambitious goals of Te Ture mo Te Reo 2016. This initiative, part of the Te Whakarauoratanga package, seeks funding to support Te Matawai to implement the Maihi Māori strategy and strengthen its statutory roles in relation to the Maihi Karauna. It will also increase its participation in the development of a shared work programme, research agenda and shared monitoring and evaluation framework and other activities for Te Whare o te Reo Mauri Ora.	Short-term	Cultural Identity Subjective Wellbeing Knowledge and Skills	1.500	6.000	-
New	Māori Development	Nga Paponu Māori – promoting and celebrating te ao Māori and matauranga Māori (Major Māori Events)	This initiative aims to strengthen a shared national identity that recognises, values and encourages te ao and matauranga Māori. This will be done through providing multi-year funding agreements for a small number of regularly occurring significant events to enable longer-term planning. This will support government's priorities of valuing who we are as a country and building closer partnerships with Māori. (Previously called Major Māori Events)	Short-term	Cultural Identity Not Applicable Not Applicable	1.000	4.000	0.005
10849	Education	Restarting Te Kotahitanga – Supporting Equitable Outcomes for Māori Learners	Led by the Associate Minister of Education (Māori Education). This initiative aims to support equitable outcomes for Māori learners by addressing cultural bias and racism in the education system (Te Hurihanganui) and supporting whanau to engage in the education of Māori learners (Mana Whanau). This will be done by testing and evaluating initiatives that support education professionals to enhance classroom practice and whole-of-school culture. It will also test and evaluate initiatives that support whanau to engage in the education of their learners and enable iwi and Māori organisations to facilitate and broker this engagement.	Medium-term	Knowledge and Skills Cultural Identity Subjective Wellbeing	9.563	38.250	-
<b>SUBTOTAL: WELLBEING OF CULTURE AND LANGUAGE</b>						<b>15.523</b>	<b>62.090</b>	<b>0.005</b>
<b>WELLBEING OF COMMUNITIES</b>								
11047	Māori Development	Modernising the Māori Wardens	This initiative seeks funding to support the modernisation of the Māori Wardens to meet contemporary community needs. This includes enabling informed decision-making on options and implications by the Wardens and New Zealand Māori Council, and developing capacity to meet current and future entity and community support needs. It will support the establishment of governance and management systems, transition of existing supports, and establishment of an Awards system.	Medium-term	Cultural Identity Not Applicable Not Applicable	0.938	3.750	0.025
11249	Māori Development	Ma te whānau e ora ai te marae - Supporting whānau-led development for marae	Ma te whānau e ora ai te marae will support whānau, hapu and iwi to revitalise marae as centres of Māori identity and matauranga, and respond to whānau and wider community need. This initiative will result in societal benefits and savings for the Crown while supporting collective impact opportunities. It will connect interests that impact marae (e.g.rural broadband connectivity) and activate other opportunities for collaboration. An evidence base providing a national picture of marae will be developed to support future investment decisions.	Medium-term	Cultural Identity Social Connection Subjective Wellbeing	3.000	12.000	0.007
11069	Māori Development	Whānau and Community Development through Housing	This funding increases investment in whānau Māori housing repairs, papakainga development and building whānau financial capability, with intergenerational impacts on wellbeing. Funds will be invested through the Māori Housing Network, using a whānau-led community development approach, seeking synergies with other Government programmes.	Medium-term	Housing Income and Consumption Safety	10.000	40.000	0.084
10750	Local Government	Enhancing relationships between local government and iwi/Māori to improve regional outcomes.	The initiative will support improved relationships between local government and iwi/Māori - a pressure point raised in nationwide Crown/Māori engagement hui. Funding will: -create a knowledge base on redress arrangements, how well they are functioning and the current state of the environment they encompass -create tools and a fund to assist local government embrace bilingual towns and cities (part of Maihi Karauna) -provide facilitators/advisers to work with local government and iwi/Māori where relationship issues are proving a significant barrier Better relationships will improve environmental, cultural and economic outcomes, especially in the regions.	Medium-term	Civic Engagement and Governance Cultural Identity Environment	2.500	10.000	-
<b>SUBTOTAL: WELLBEING OF COMMUNITIES</b>						<b>16.438</b>	<b>65.750</b>	<b>0.116</b>



No.	Portfolio	Title	Agency Description of Submitted Initiative	Expected Timeframe for Impact	Wellbeing domains impacted (In order of impact)	Near Final Package (\$m)		
						Opex Avg.	Opex Total	Capex Total
<b>THE FUTURE WELLBEING OF MĀORI</b>								
10674	Māori Crown Relations: Te Arawhiti	Funding to support the Māori Crown Relations: Te Arawhiti portfolio and the operating model for Te Arawhiti	This initiative seeks funding for: <ul style="list-style-type: none"> <li>the on-going costs of the operating model of Te Arawhiti of which the Office of Treaty Settlements, Marine and Coastal Area Unit, the Settlement Commitments Unit and the Māori Crown Relations Unit will sit underneath;</li> <li>the operational costs of the Māori Crown Relations Unit; and</li> <li>four specific projects that support responsibilities under the Māori Crown Relations: Te Arawhiti portfolio.</li> </ul>	Short-term	Civic Engagement and Governance, Cultural Identity, Social Connection	3.250	13.000	-
11073	Māori Development	Whenua Māori Programme	This funding will support Māori freehold landowners (FLO) to achieve their whenua aspirations and attain sustainable intergenerational outcomes that benefit the wellbeing of whānau Māori and Aotearoa and will be spent on: <ul style="list-style-type: none"> <li>improving technology and regulatory systems;</li> <li>establishing focused and coordinated services (in 4 regions with the opportunity to replicate services across Aotearoa).</li> </ul> The programme is aligned to Government priorities for wellbeing for Māori. Cabinet Māori Crown Relations Committee supported the approach [MCR-18-MIN-0018].	Medium-term	Jobs and Earnings, Income and Consumption, Environment	13.500	54.000	2.107
11050	Māori Development	Improving Māori Labour Market Resilience	This funding will support measurable improvements in Māori Labour market resilience and in the labour market profile of Māori. The initiative will work with employers in growth industries to attract, retain and develop Māori, and with whānau to increase their understanding of the future of work. [33]	Medium-term	Knowledge and Skills, Jobs and Earnings, Income and Consumption	1.500	6.000	-
10672	Treaty of Waitangi Negotiations	Treaty of Waitangi Settlement Negotiations: Relativity Mechanism Dispute Resolution	This funding will enable the Crown to participate in the resolution of disputes arising from the Relativity Mechanisms included in the historical Treaty settlements with Waikato-Tainui and Ngai Tahu.	Short-term	Civic Engagement and Governance, Not Applicable, Not Applicable	0.625	2.500	-
10673	Treaty of Waitangi Negotiations	Completing historical Treaty of Waitangi settlement negotiations with willing and able iwi groups	This initiative seeks funding for continued and additional operating funding for the Office of Treaty Settlements to give the Government its best opportunity to settle the historical Treaty of Waitangi claims of willing and able iwi groups as quickly and as fairly as it can	Short-term	Civic Engagement and Governance, Cultural Identity, Social Connection	1.000	4.000	-
<b>SUBTOTAL: THE FUTURE WELLBEING OF MĀORI</b>						<b>19.875</b>	<b>79.500</b>	<b>2.107</b>
<b>PACIFIC WELLBEING</b>								
11186	Pacific Peoples	Enhance Pacific Economic Development	This initiative is to increase the capability and capacity of the Pacific Business Trust to: deliver a range of business-facing services to a larger cohort of Pacific businesses; provide support for industry and community economic development activities focused on growing Pacific business capability and jobs; and ensure there is a broad range of marketing and intelligence activities, including communications and promotion, research, and monitoring and evaluation to grow Pacific businesses.	Short-term	Jobs and Earnings, Knowledge and Skills, Cultural Identity	2.788	11.150	-
11172	Pacific Peoples	Pacific Employment Support Service (PESS)	This was submitted as a joint bid with HPR, but we have separated them in order to make clear the funding amounts. Please refer to above for description	Short-term	Jobs and Earnings, Knowledge and Skills, Not Applicable	3.623	14.490	-
[33]								
10851	Education	Improving and accelerating education outcomes for Pacific Learners	This initiative will fund system-wide components to: <ul style="list-style-type: none"> <li>urgently address the inequity in Pacific learner achievement</li> <li>ensure the education system achieves excellence for all Pacific learners</li> <li>embed a coherent set of Pacific specific targets across key workstreams</li> <li>encourage the effective use of data and evidence regarding Pacific learning</li> <li>foster bilingual education.</li> </ul>	Medium-term	Knowledge and Skills, Cultural Identity, Social Connection	4.349	17.397	-
10796	Health	Increasing the Pacific Provider and Workforce Development Fund (PPWDF) to support a Pacific workforce pipeline	This increased PPWDF funding seeks to develop a suite of initiatives to support a strong and sustainable Pacific workforce. This funding seeks to strengthen a Pacific pipeline approach from secondary school, to tertiary study, work experience and placements in Pacific providers to additional postgraduate study to support Pacific leadership in the health sector.	Medium-term	Health, Jobs and Earnings, Knowledge and Skills	[33]		-

No.	Portfolio	Title	Agency Description of Submitted Initiative	Expected Timeframe for Impact	Wellbeing domains impacted (In order of impact)	Near Final Package (\$m)		
						Opex Avg.	Opex Total	Capex Total
10797	Health	Increased investment in Pacific Innovation Funds	This funding will support the development of innovative Pacific models of care, initiatives/programmes that are targeted towards improving Pacific health outcomes. The increase in funding purchases greater flexibility and resources for the Ministry to plan, drive and assess community innovation including establishing a virtual and centralised innovation hub across health and Pacific agencies' for evidence-based Pacific approaches/models of care (cultural, spiritual and family-focused approaches).	Medium-term	Health Cultural Identity Knowledge and Skills	2.442	9.768	-
11180	Pacific Peoples	Ensuring Pacific languages survive within New Zealand's Pacific communities	The initiative proposes to establish a new set of language support functions within the Ministry for Pacific Peoples. The functions are part of a wider proposal agreed by Cabinet (SWC 18 MIN-0160) to ensure Pacific languages survive. Pacific languages are in decline both in New Zealand and overseas. There is a general recognition that languages are important for people's cultural identity and that languages and culture are related to a person's sense of belonging and potential to participate with confidence in society.	Long-term	Cultural Identity Social Connection Knowledge and Skills	5.011	20.042	-
10818	Housing and Urban Development	Financial capability services to support Pacific households into home ownership	This funding will allow the Ministry of Housing and Urban Development to provide Pacific households with financial capability services to help them achieve their home ownership aspirations. These services will provide Pacific households with information about the practicalities of purchasing a home, the opportunities and assistance available to them, a plan to help them save for a deposit and the knowledge to sustain their ownership over time.	Short-term	Housing Income and Consumption Health	0.660	2.640	-
10806	Health	Reducing the incidence and the improving the management of rheumatic fever	This funding will be used for rheumatic fever and rheumatic heart disease prevention and management in the Auckland region, and includes a set of initiatives to: •To improve access to primary care for sore throat management in the Auckland region for Māori and Pacific ethnic groups. •Pilot screening for rheumatic heart disease for Māori and Pacific pregnant women. •Pilot access to free dental care for people with rheumatic fever and rheumatic heart disease. It will also be used to: •Implement a national rheumatic fever register. •Implement the recommendations from the Healthy Homes Initiatives process evaluation.	Medium-term	Health Jobs and Earnings Knowledge and Skills	3.000	12.000	-
10794	Health	Wraparound support programme for Pacific students	This option proposes the development of a wraparound support programme to support nursing/midwifery students. This option would be targeted at increasing the number of young Pacific students completing tertiary study in the areas of nursing and midwifery. We know that there is a stark gap in the current workforce in these two areas.	Medium-term	Knowledge and Skills Jobs and Earnings Health	1.084	4.335	-
11105	Economic Development	Senior Diverse Leaders: Specialised Pacific skills, leadership and talent pipeline capability-building pilot	This funding is for a specialised Pacific skills, leadership and talent pipeline capability-building pilot focused on identifying, enabling and delivering systems-change opportunities across public sector administration agencies. The pilot will contribute to ensuring that Pacific peoples in New Zealand's public sector workforce are supported to play an active role in the delivery of the Government's economic strategy. Findings from the pilot will also inform the review of the State Sector Act in relation to diversity and inclusion outcomes.	Medium-term	Knowledge and Skills Jobs and Earnings Cultural Identity	0.350	1.400	-
<b>SUBTOTAL: PACIFIC WELLBEING</b>						[33]		-
<b>PRIORITY C TOTAL</b>								<b>5.432</b>
<b>MCR INITIATIVES - PRIORITISATION INITIATIVES</b>								
11330	Māori Development	Reprioritisation of funding – Electoral Participation	Funding to increase Māori awareness of and participation in elections can be prioritised as it has been agreed between Te Puni Kokiri and the Electoral Commission that it is the Electoral Commission's responsibility to improve Māori participation rates in elections and so should be funded as such. Ahead of future elections the Electoral Commission will work with Te Puni Kokiri to ensure that they better serve Māori.			(2.000)	(8.000)	-
11331	Māori Development	Reprioritisation of funding - Moving the Maori Nation - Matika	Moving the Māori Nation – Matika (funding to support Māori sporting and cultural events).			(0.263)	(1.052)	-
11230	Pacific Peoples	Reprioritisation of funding - Registering Pacific organisations as Community Housing Providers	This funding is for a specialised Pacific skills, leadership and talent pipeline capability-building pilot focused on identifying, enabling and delivering systems-change opportunities across public sector administration agencies. The pilot will contribute to ensuring that Pacific peoples in New Zealand's public sector workforce are supported to play an active role in the delivery of the Government's economic strategy. Findings from the pilot will also inform the review of the State Sector Act in relation to diversity and inclusion outcomes. During preparation of this release it was discovered that this description was incorrect. It refers to item 11105, when it should be about Community Housing Providers, as per the title.			(0.100)	(0.400)	-
<b>TOTAL: PRIORITISATION</b>						<b>(2.363)</b>	<b>(9.452)</b>	<b>-</b>