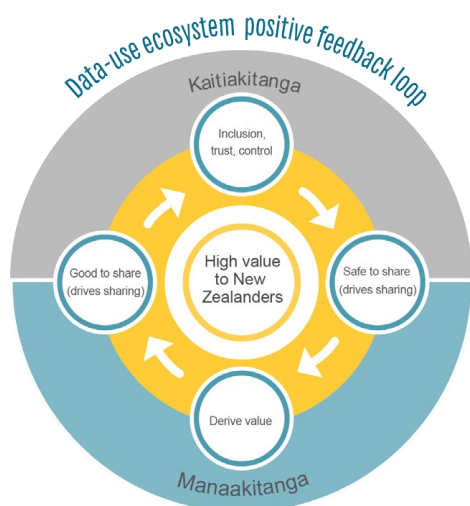


# Enabling Iwi/Māori development

## Connecting the government data dots



In appreciating that better access and use of data is critical for effective decision making and supporting Iwi/Māori to progress their own development agenda's the government is organising two workshops on joining the government data dots. The first of these hui will provide valuable information about data held by Statistics NZ and a range of other government agencies that Iwi/Māori can use to support and enable them to achieve social and economic prosperity and wellbeing.

This event will be a two-way kōrero, commencing with an opening address, by the Minister of Finance, Hon Bill English. It is also an opportunity for Iwi/Māori to showcase what data you're using, and highlight issues your organisation may be experiencing when it comes to access and use of data.

This is also an opportunity to plan ahead. The inclusion of census data into Statistics NZ's Integrated Data Infrastructure (IDI) in October 2015, will create an even richer source of information for Iwi/Māori.

The 24 September hui will enable early thinking about how a census-enhanced IDI can provide deeper insights for Iwi/Māori.

The second hui, will be held in early December, and will bring Iwi/Māori leaders together with key social sector NGOs and government agencies to actively explore potential collaborative use of data.

---

## Hui details

---

Thursday,

24 September 2015

11.00am - 4.00pm

Nau Mai Room,

Te Puni Kokiri House,

143 Lambton Quay

New Zealand Government