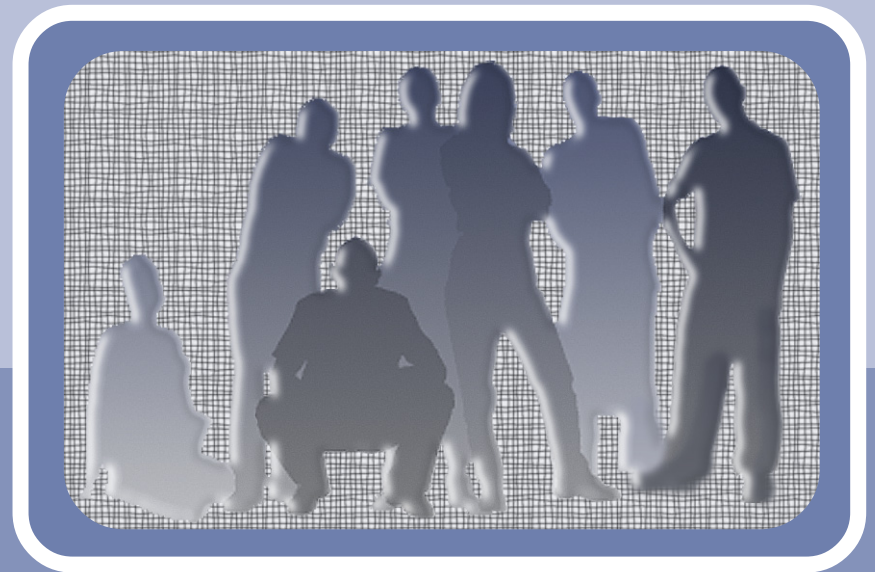


Labour Force Participation and Economic Growth Workshop

P R O G R A M M E



Lambton Rooms, InterContinental Wellington
Cnr Grey & Featherston Streets

Day One 14 April 2005

Time	Session	Speakers
8.30 - 9.00am	Coffee and Registration	
<i>Opening Session: Chair: Peter Mersi, Treasury</i>		
9.00 – 9.10am	Welcome, overview and objectives	John Whitehead Secretary to the Treasury
9.10 – 9.30am	Official Opening	Hon Dr Michael Cullen Deputy Prime Minister and Minister of Finance
9.30 – 10.30am	Key Note Address: Family Decisionmaking and Labour Force Participation	Shelly Lundberg University of Washington
10.30 – 11.00am	COFFEE	
<i>Theme 1: Who is/is not participating in the labour market? Chair: Peter Wilson, Treasury</i>		
11.00 – 11.45am	Critical Issues in Labour Force Participation	Bob Gregory Australian National University
11.45-12.30pm	Gender and ethnicity in the labour market participation decision	Murat Genç and Robert Alexander University of Otago
12.30 – 1.30pm	LUNCH	
1.30 – 2.15pm	Women's Labour Force Participation in New Zealand and the OECD	Grant Johnston Treasury
<i>Theme 2: Why are people not participating in the labour market? Chair: Don Gray, Ministry of Social Development</i>		
2.15-3.00pm	Some Good News About an Ageing Workforce	Ross Guest Griffith University
3.00 – 3.30pm	COFFEE	
3.30 -4.15pm	The effect of New Zealand Superannuation eligibility age on the labour force participation rates of older people	Roger Hurnard Treasury
4.15 -5.00pm	Employment Effects of Earnings Subsidies: Evidence and Lessons	Dean Hyslop Treasury
7.00 – 7.30pm	PRE DINNER DRINKS	
7.30 – 9.30pm	WORKSHOP DINNER	Trudie McNaughton

Day Two 15 April 2005

Time	Session	Speakers
<i>Theme 3: What works in increasing participation? Chair: Mary Anne Thompson, Department of Labour</i>		
8.30 -9.15am	Disability Policy: Lessons for NZ	Christopher Prinz OECD
9.15 – 10.00am	Female Labour Force Participation: Past Trends and Main Determinants in OECD Countries	Florence Jaumotte OECD
10.00 – 10.30am	COFFEE	
10.30 – 11.15am	What Works: Lessons for New Zealand	Mark Vink and Nick Mays Treasury
<i>Theme 4: What are the effects of increasing participation? Chair: Shenagh Gleisner, Ministry of Women's Affairs</i>		
11.15 – 12.00pm	Mothers' employment and child development	Christopher Ruhm University of North Carolina Greensboro
12.00 – 1.00pm	LUNCH	
1.00 – 1.45pm	The changing distribution of paid and unpaid work in New Zealand	Paul Callister Victoria University
1.45 -2.30pm	Gendered work and its impact on labour force participation	Michael Bittman University of New England
2.30 – 3.00pm	COFFEE	
<i>Closing Session: Chair: Peter Bushnell, Treasury</i>		
3.00-3.45pm	Labour Force Participation and well-being	Jane Higgins University of Canterbury
3.45-4.30pm	Insights and Implications: The Rip van Winkel test of the workshop	Bob Buckle Treasury
4.30-5.00pm	Official Closing	James Buwalda Department of Labour